

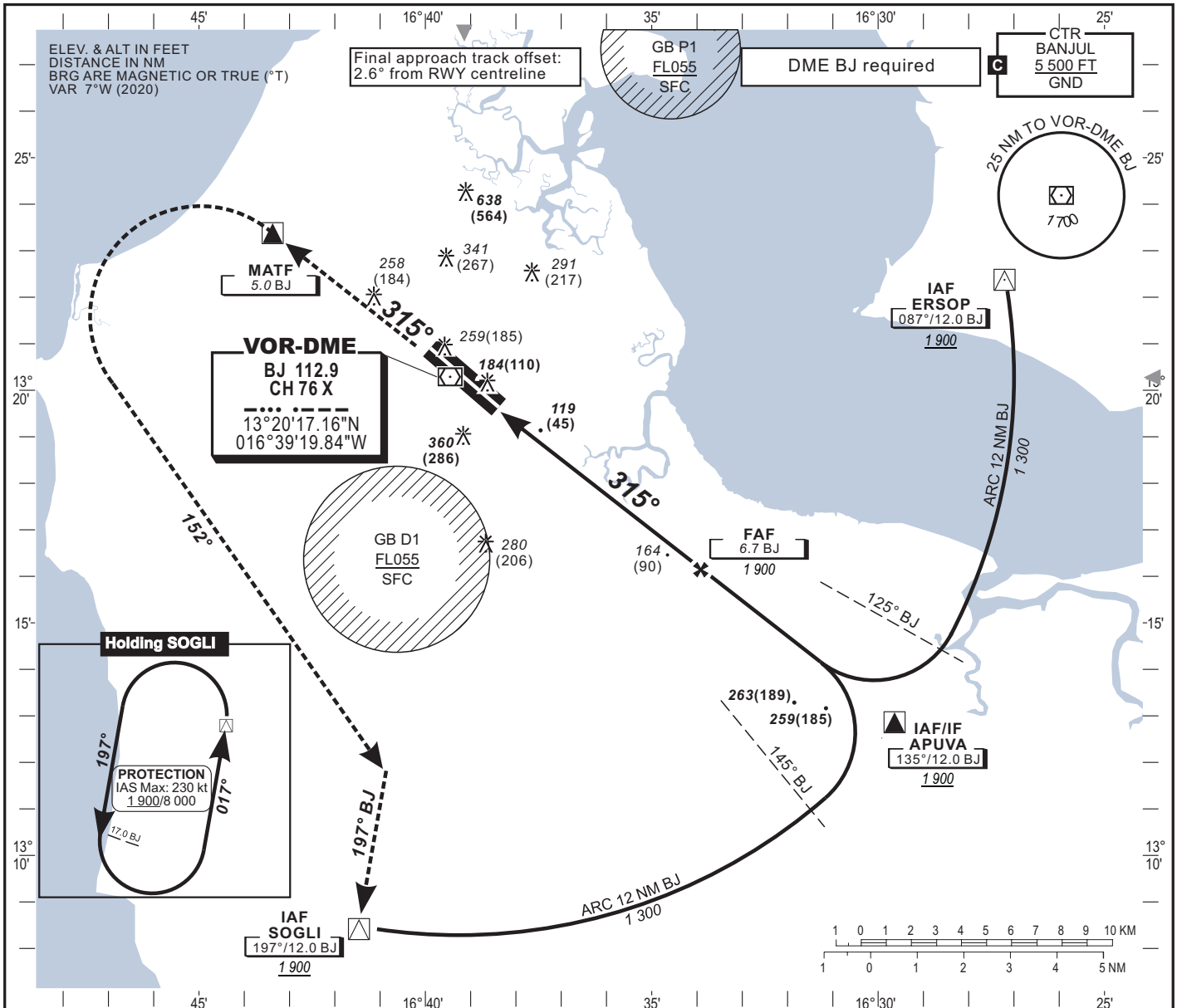
**INSTRUMENT  
APPROACH CHART**  
Categories A-B-C-D

**AERODROME ELEV. : 93**  
HEIGHTS RELATED TO  
THR RWY 32 ELEV. : 74

APP 121.3  
TWR 118.3  
GND

**BANJUL /Intl (GBYD)**

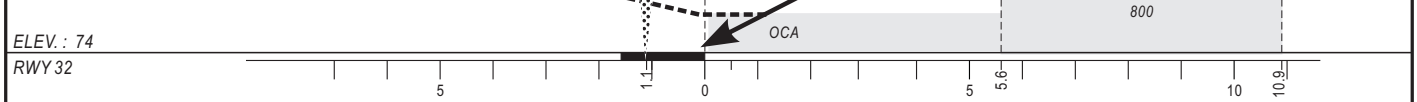
**VOR Z RWY 32**



TO BJ (NM)	RWY32	2.0	3.0	4.0	5.0	6.0	FAF
ALTITUDE (FT)		-	720	1 040	1 360	1 670	1 900

TRANSITIONAL ALTITUDE 2500

**Missed approach:** Climb straight ahead; at 5.0 NM BJ, turn left, follow magnetic route 152°, intercept and follow radial 197° BJ to SOGLI at or above 1 900 ft for hold or as instructed by ATC. Max IAS, 230 kt.



<b>OCA(OCH)</b>	A	B	C	D	<b>Ground speed (kt)</b>	kt	70	90	100	120	140	160
<b>VOR-DME</b>	460 (390)	460 (390)	460 (390)	460 (390)	<b>Rate of descent (ft/min)</b>	ft/min	370	475	530	630	740	845
<b>CIRCLING(*)</b>	660 (560)		1 040 (950)		<b>Timing FAF-MAPt (**)</b>	min:sec	4:48	3:44	3:22	2:48	2:24	2:06

**Notes:**  
 - RDH: 15 m;  
 - \*Heights AAL;  
 - \*\*Timing not authorized for defining MAPt.

CHANGE : Third edition