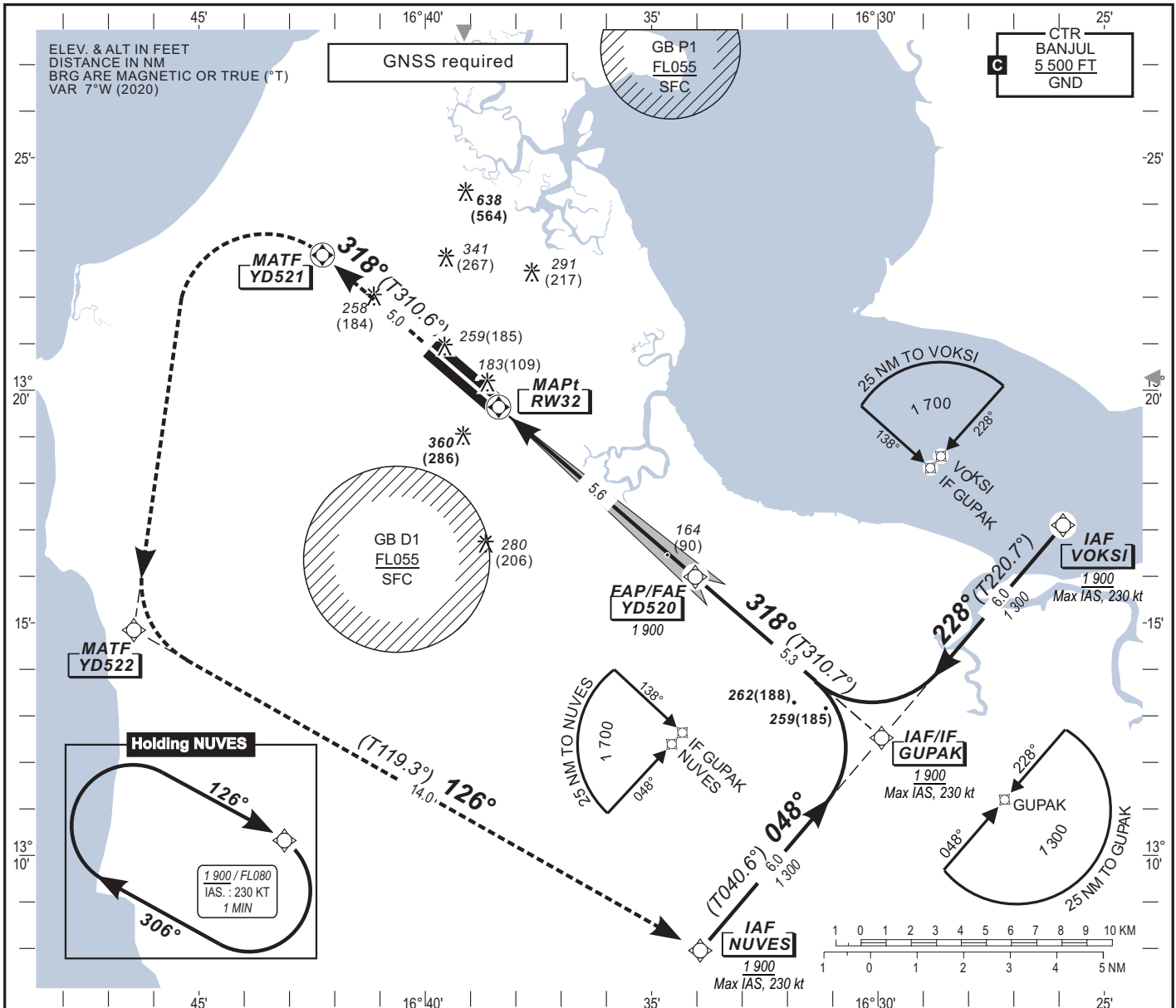


**INSTRUMENT  
APPROACH CHART**  
Categories A-B-C-D

**AERODROME ELEV. : 93**  
**HEIGHTS RELATED TO  
THR RWY 32 ELEV. : 74**

APP 121.3  
TWR 118.3  
GND

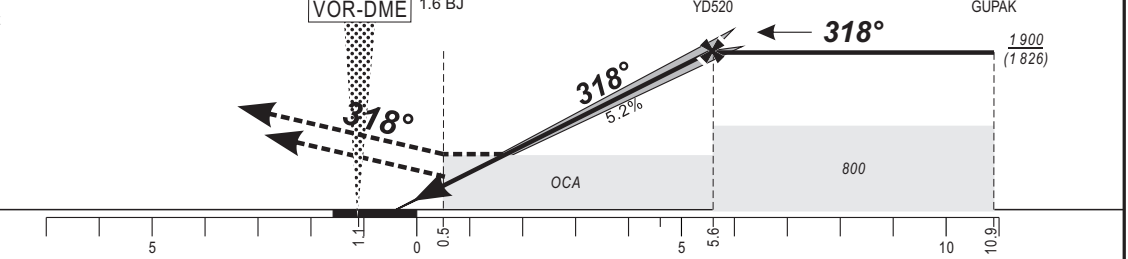
**BANJUL /Intl (GBYD)**  
**ILS X or LOC X RWY 32**



TO ILS-DME (NM)	RWY32	1.0	2.0	3.0	4.0	5.0	FAF
ALTITUDE (FT)		-	700	1 020	1 340	1 650	1 900

TRANSITIONAL ALTITUDE 2500

**Missed approach:** Climb straight ahead to YD521. Turn left to YD522 and then, turn left to NUVES climbing to 1 900 ft for hold or as instructed by ATC. IAS max, 230 kt at YD521.



OCA(OCH)	Ground speed (kt)				kt	70	90	100	120	140	160
	A	B	C	D							
Cat. 1	320 (250)	320 (250)	320 (250)	320 (250)	ft/min	370	475	530	630	740	845
LOC-DME	370 (300)				Timing FAF-MAPt (**)	min:sec	4:22	3:24	3:04	2:33	2:11
CIRCLING(*)	660 (560)		1 040 (950)								

**Notes:**  
 - RDH: 15 m;  
 - \*Heights AAL;  
 - \*\*Timing not authorized for defining MAPt.

CHANGE - New edition