

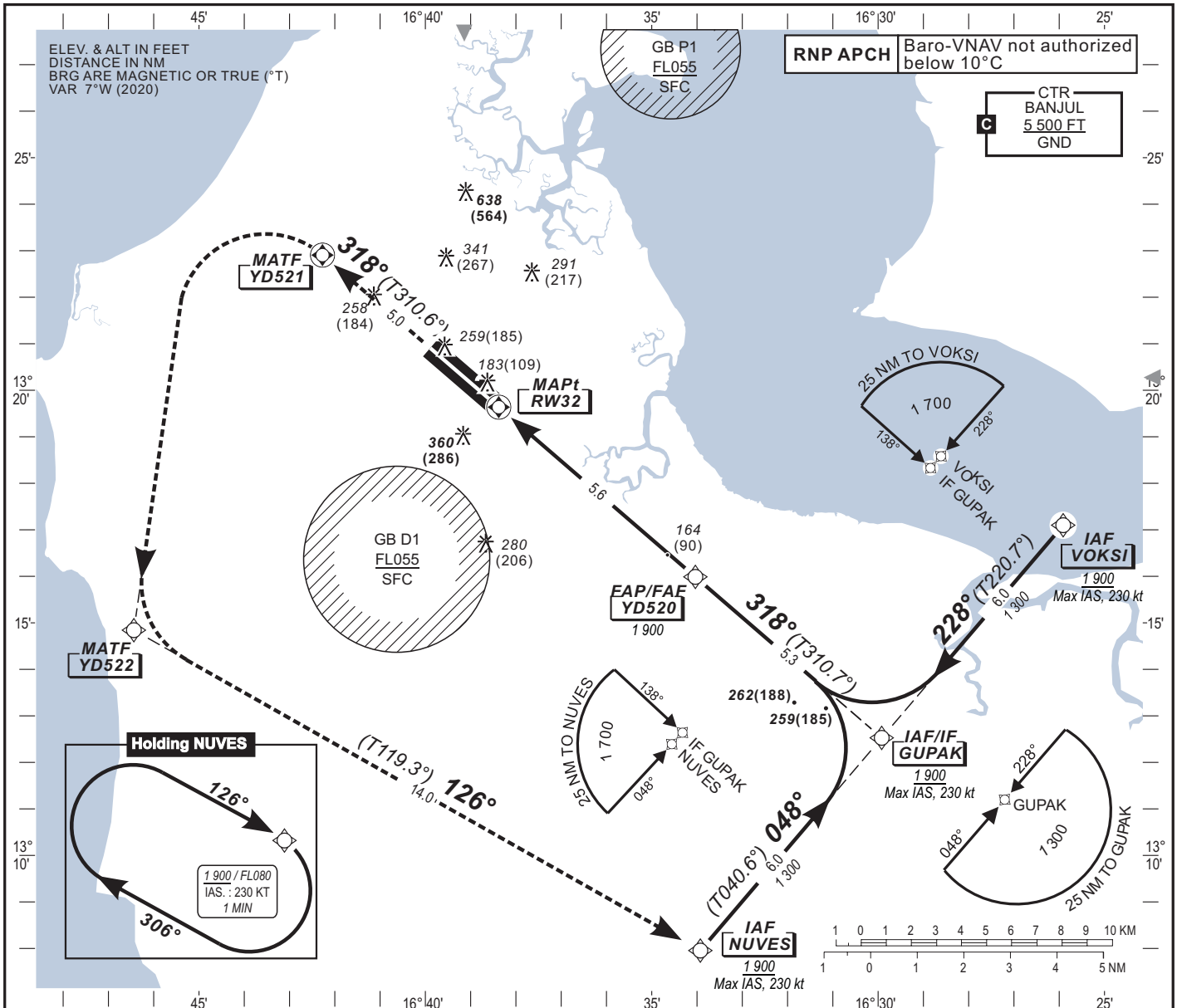
**INSTRUMENT
APPROACH CHART**
Categories A-B-C-D

AERODROME ELEV. : 93
**HEIGHTS RELATED TO
THR RWY 32 ELEV. : 74**

APP 121.3
TWR 118.3
GND

BANJUL /Intl (GBYD)

RNP RWY 32



TO RW32 (NM)	RWY32	1.0	2.0	3.0	4.0	5.0	5.6
ALTITUDE (FT)		-	760	1 070	1 390	1 710	1 900

TRANSITIONAL ALTITUDE 2500

Missed approach: Climb straight ahead to YD521. Turn left to YD522 and then, turn left to NUVES climbing to 1 900 ft for hold or as instructed by ATC. IAS max, 230 kt at YD521.

ELEV. : 74



OCA(OCH)	Ground speed (kt)				kt	70	90	100	120	140	160	
	A	B	C	D								
LNAV/VNAV	360 (290)	380 (310)	380 (310)	400 (330)	Rate of descent (ft/min)	ft/min	370	475	530	630	740	845
LNAV	420 (350)				Timing FAF-MAPt (**)	min:sec	4:48	3:44	3:22	2:48	2:24	2:06
CIRCLING(*)	660 (560)		1 040 (950)									

Notes:
-RDH 15 m;
-(*) Heights AAL;
-(**) Timing not authorized for defining MAPt.

CHANGE : New edition